



GOLF VIEWS SEVEN CITY PRESENTATION

+971 (4) 383-9377 | dubai-golf.ae

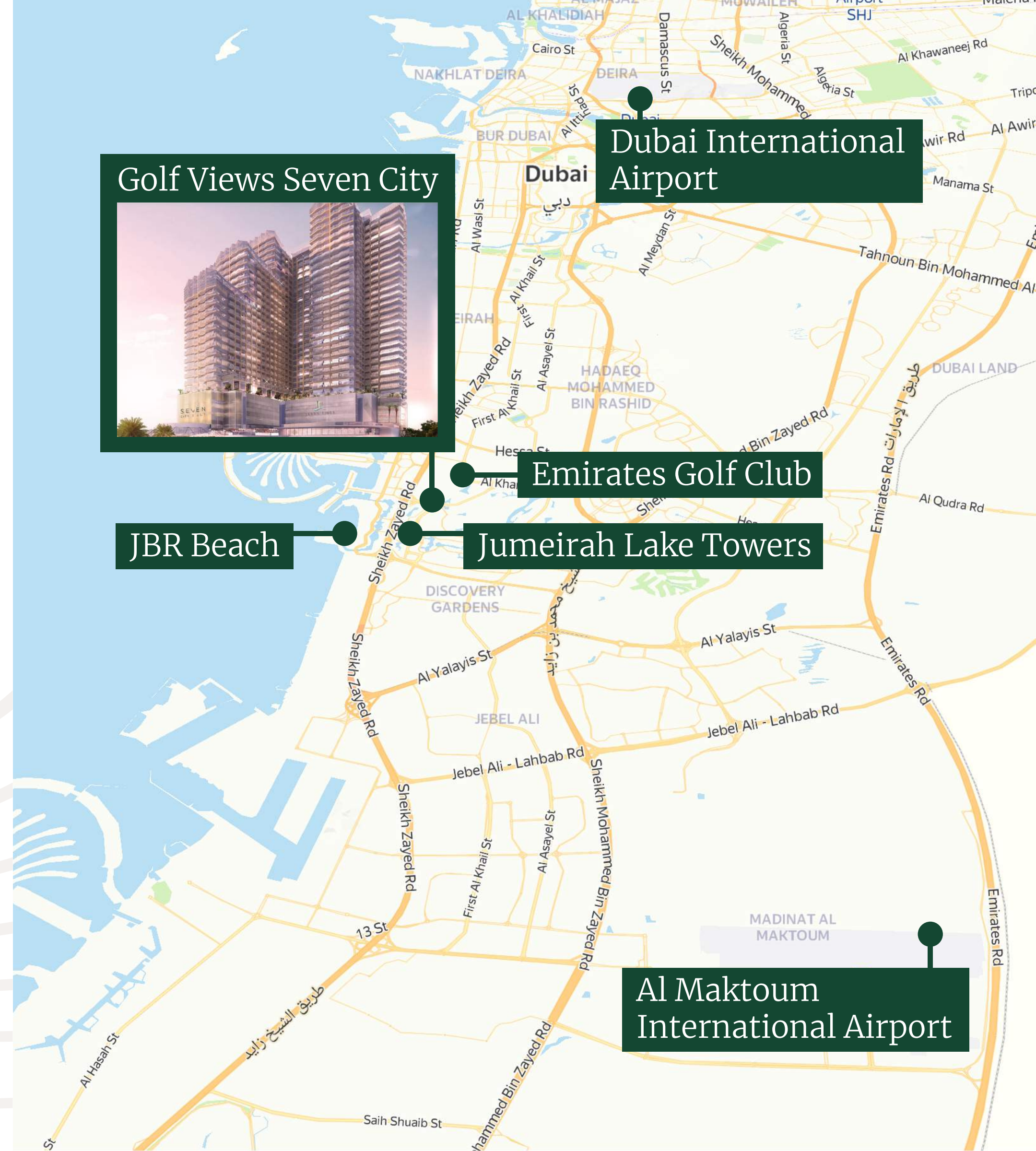


SKYSCRAPER next to the golf courses Golf Views Seven City, overlooking the lake, is located in Jumeirah Lake Towers.

The famous Emirates Golf Club is a 5-minute walk away. And in just 10 minutes one can get to JBR Beach offering parasailing, wakeboarding, banana boat rides, and camel rides.

The tower is 25 minutes from Dubai International Airport and 30 minutes from Al Maktoum International Airport.

+971 (4) 383-9377 | dubai-golf.ae





360° VIEWS OVER THE DUBAI MARINA, JUMEIRAH LAKE TOWERS LAKES, DOWNTOWN AND GOLF COURSES

Positioned at the edge of Jumeirah Lake Towers, Golf Views Seven City offers spacious terraces overlooking the lakes and glittering blue Dubai Marina skyline on one side, and rich greenery of Emirates Golf Club and the Downtown area on the other.





PREMIUM RESIDENTIAL COMPLEX FOR FAMILIES

Golf Views Seven City consists of 3 blocks up to 39 stories high. The complex offers small cozy 775 ft² studios and fully furnished spacious family apartments with two or three bedrooms.





GOLF AS A LIFESTYLE

Professional, seasoned or non-professional golf players can visit the Emirates Golf Club just a 5-minute walk from the apartments, and enjoy spa treatments after a long game.



AN OASIS IN THE HEART OF DUBAI

Golf Views Seven City is a modern futuristic skyscraper. The architects have provided residents with multiple leisure spaces, from rooftop swimming pools to terraces with panoramic views over the entire Dubai, night Downtown, Dubai Marina and Golf Courses. Golf Views Seven City has 3 blocks with separate lobbies and a private entrance and access to all infrastructure.



LOBBY

The moment you enter the lobby you're greeted by a friendly concierge.

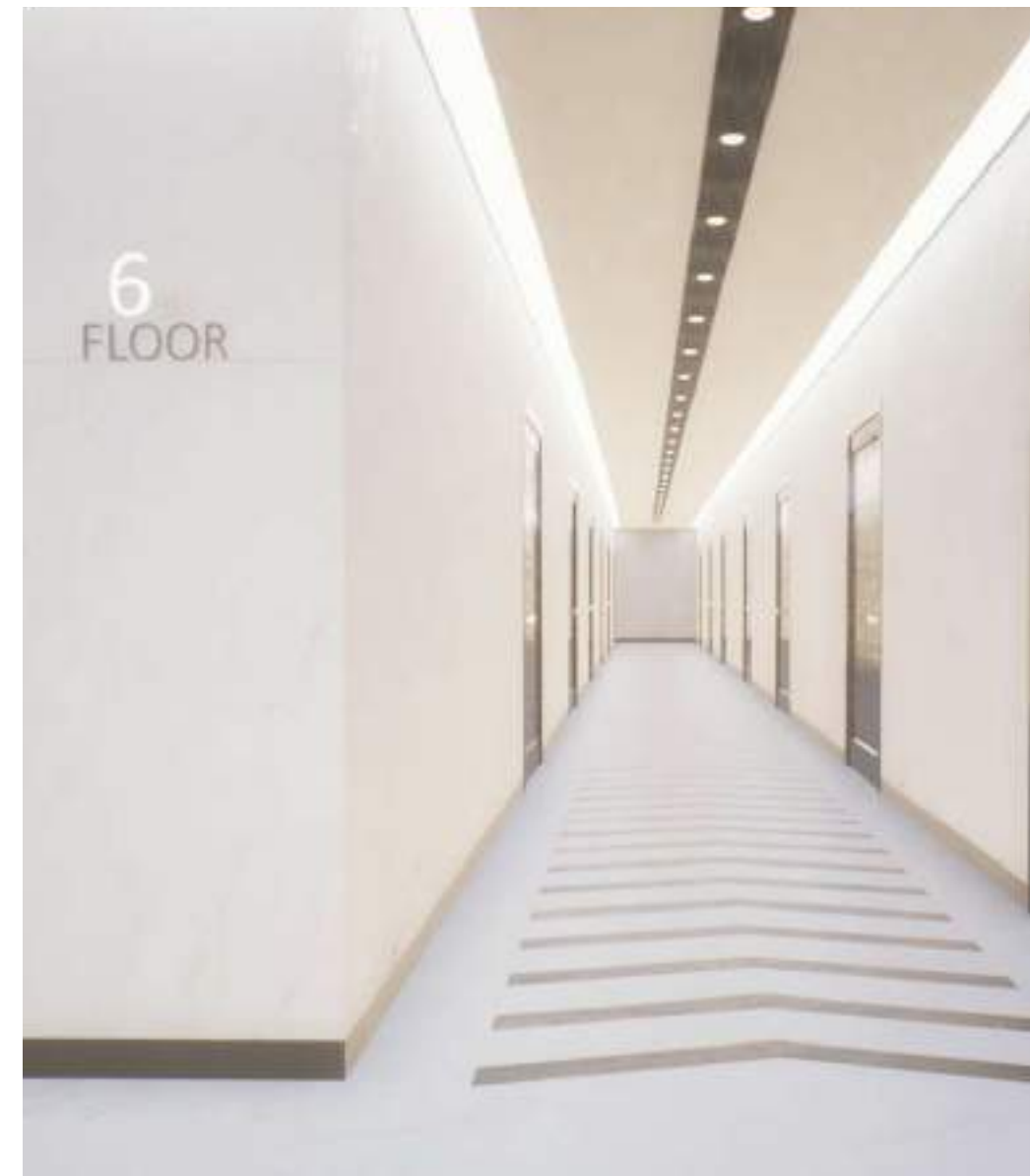
The marble interior is designed with a natural stone reception and emerald wall light panels.

The sofa area is ideal for meeting guests and business appointments.



HOTEL ON THE GROUND FLOORS

There are hotel apartments on the ground floors of the skyscraper. An attentive concierge service will quickly and professionally solve all household and personal issues — from meeting a courier to booking air tickets or a table in a restaurant.





FULLY FINISHED AND FURNISHED TURNKEY APARTMENTS

All apartments are fully finished and furnished. They have wardrobes, upholstered furniture, built-in kitchen appliances, and a climate control system.





● floor-to-ceiling window

● private terraces

● upholstered furniture

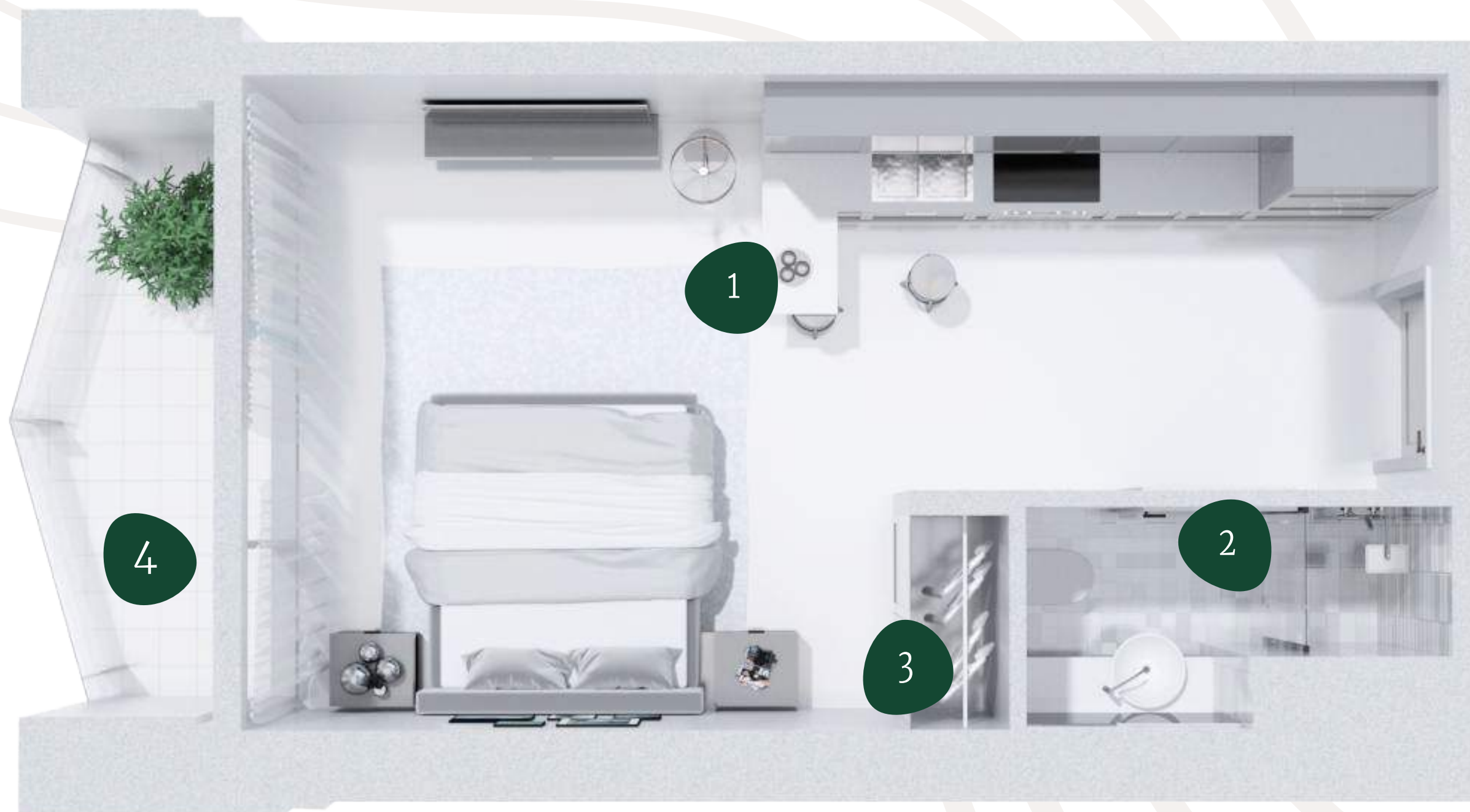
● built-in appliances

● porcelain tile floor

GOLF VIEWS SEVEN CITY STUDIOS

Area: 416 sq/ft
Layout example

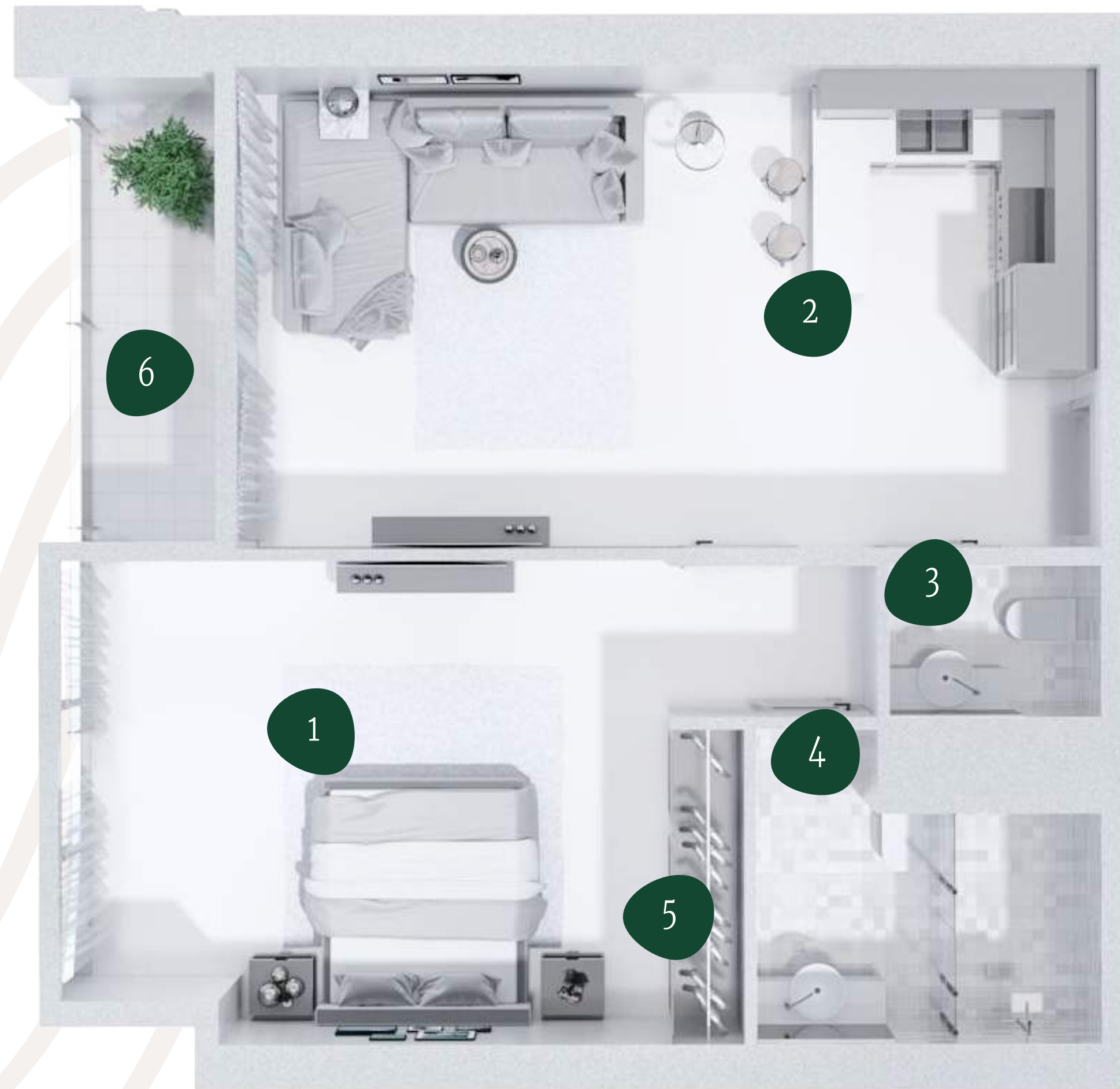
- 1 — bedroom+kitchen
- 2 — bathroom
- 3 — wardrobe
- 4 — terrace



ONE-BEDROOM APARTMENTS

Area: 775 sq/ft
Layout example

- 1 — bedroom 1
- 2 — kitchen
- 3 — bathroom 1
- 4 — bathroom 2
- 5 — wardrobe
- 6 — terrace



TWO-BEDROOM APARTMENT

Area: 1070 sq/ft
Layout example

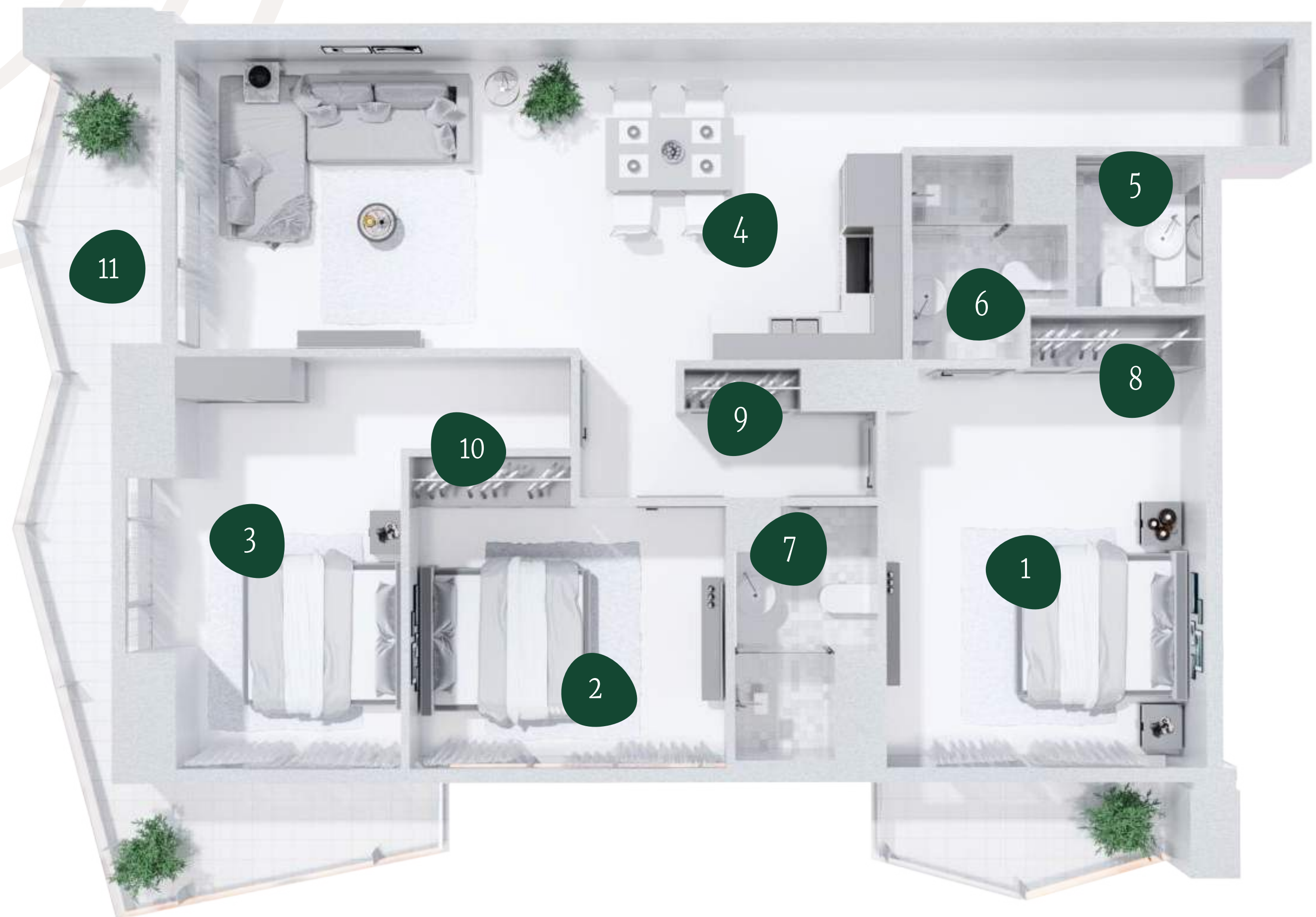
- | | |
|----------------|----------------|
| 1 — bedroom 1 | 6 — wardrobe 1 |
| 2 — bedroom 2 | 7 — wardrobe 2 |
| 3 — kitchen | 8 — terrace |
| 4 — bathroom 1 | |
| 5 — bathroom 2 | |



THREE-BEDROOM APARTMENT

Area: 1520 sq/ft
Layout example

- | | |
|----------------|-----------------|
| 1 — bedroom 1 | 8 — wardrobe 1 |
| 2 — bedroom 2 | 9 — wardrobe 2 |
| 3 — bedroom 3 | 10 — wardrobe 3 |
| 4 — kitchen | 11 — terrace |
| 5 — bathroom 1 | |
| 6 — bathroom 2 | |
| 7 — bathroom 3 | |



ROOFTOP SWIMMING POOLS

Take the lift to the 39th floor and find yourself on the rooftop with 4 outdoor swimming pools with panoramic views over the Dubai Marina, lakes and golf courses.

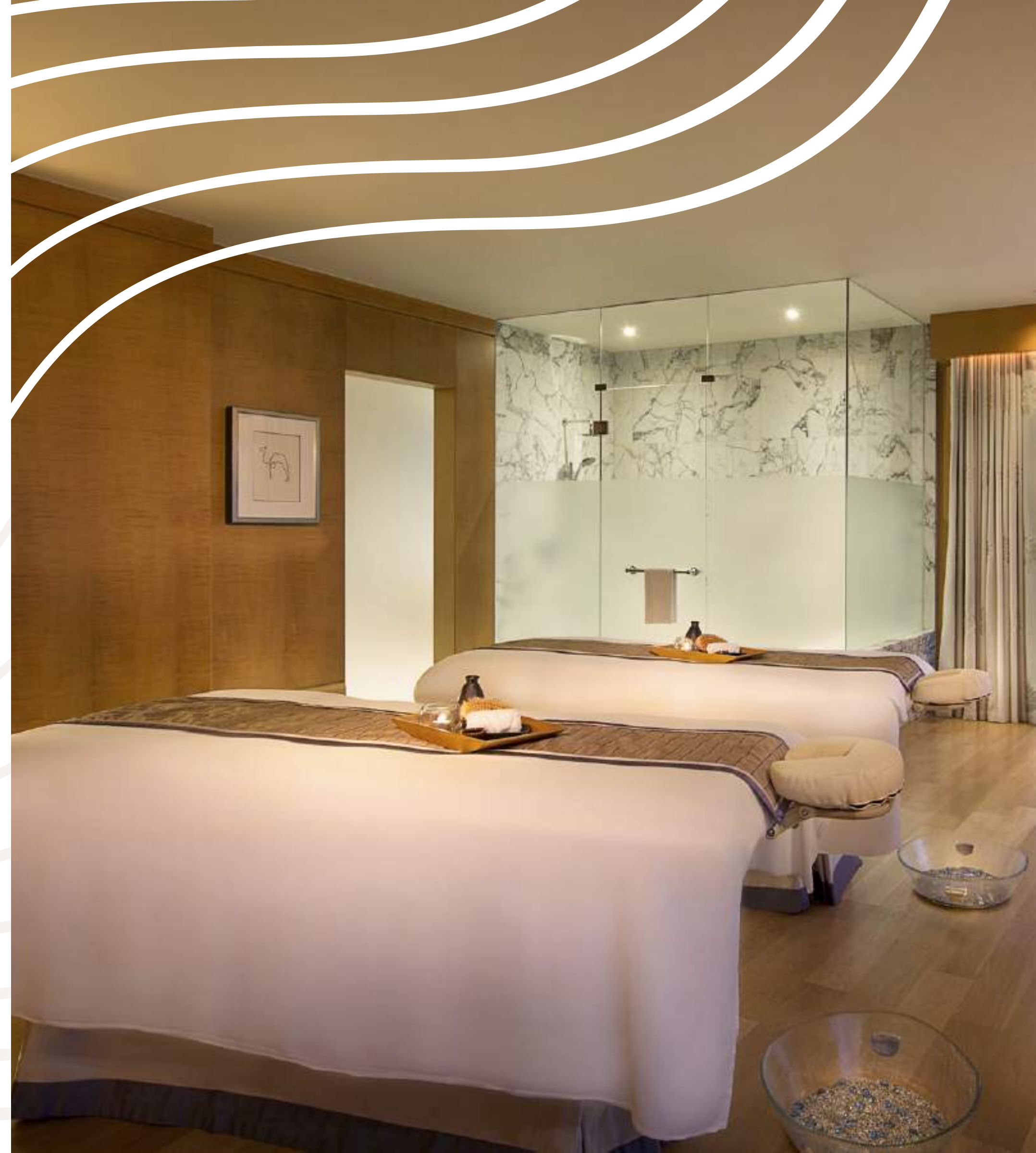




PRIVATE SPA CENTER

Visit the Golf Views Seven City's private spa for a sauna, steam room or massage.

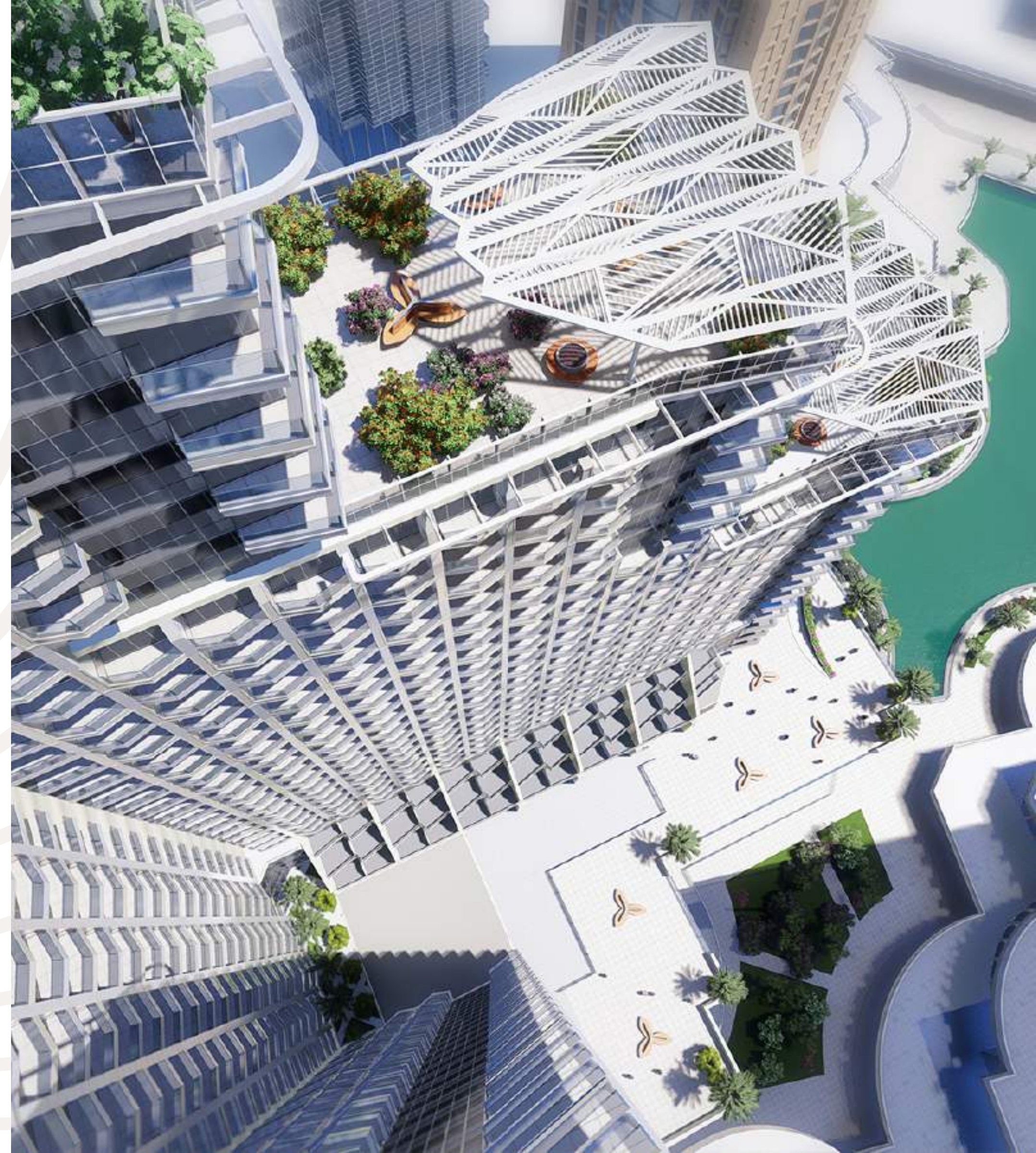
+971 (4) 383-9377 | dubai-golf.ae





SKY-HIGH GREEN GARDENS

Residents of Golf Views Seven City can spend their evening in one of 12 rooftop greenhouses or landscaped gardens.





SHOPPING CENTER ON THE GROUND FLOORS

Take the lift down to the 24-hour shopping center for homeware, flowers or gifts.

+971 (4) 383-9377 | dubai-golf.ae



INTERESTING LEISURE ACTIVITIES FOR KIDS

The complex offers the smallest residents safe playgrounds with slides, stairs, sandpits and swings. Parents of much older children can enjoy a cup of coffee or fresh juice in the restaurant next to the playground.



ROOFTOP LOUNGE

Apartment owners can take the lift to the rooftop lounge area and enjoy the views over the Dubai Marina skyscrapers or the green landscapes of golf courses.



OUTDOOR TENNIS AND BASKETBALL COURTS

On chilly evenings, team players can enjoy a couple of tennis sets on the complex's illuminated tennis courts. There are also basketball courts for training and games nearby.



GASTRONOMICAL RESTAURANTS AND CAFES

Dine at one of the restaurants, bars and cafes right within Golf Views Seven City. They offer cuisines for every gastronomic taste and preference.



SPORTS INFRASTRUCTURE NEAR THE HOUSE

Joggers can take advantage of tracks on the territory that form a full-fledged running route. Besides, there is a private indoor gym for residents to work out with a personal trainer, as well as yoga and pilates center.





SPACIOUS PARKING WITHIN THE RESIDENTIAL COMPLEX

+971 (4) 383-9377 | dubai-golf.ae

PROJECT DEVELOPER — SEVEN TIDES

The international company Seven Tides has been building unique architectural projects for residents of Dubai and London since 2004. The company's most famous projects are Anantara The Palm Dubai Resort, Seven Palm complex, and Mövenpick Ibn Battuta Gate hotel.



HANDOVER DATE

Positioned at the edge of Jumeirah Lake Towers, Golf Views Seven City offers spacious terraces overlooking the lakes and glittering blue Dubai Marina skyline on one side, and rich greenery of Emirates Golf Club and the Downtown area on the other.





TO SIGN UP FOR A GOLF VIEWS
SEVEN CITY GUIDED TOUR,
PLEASE CALL:

+971 (4) 383-9377

dubai-golf.ae





Real Estate Experts

We sell deluxe, premium and business class properties
in 100 new residential projects in Dubai

+971 (4) 383-9377

